

Green Move

5 th Event
2-5 March 2026
Paphos, Cyprus



2026

Jose.mariosilva@cm-valongo.pt

Valongo is part of the first metropolitan ring of Porto, combining urban, peri-urban and rural territories. Our municipality faces typical transition challenges: mobility pressure, social asymmetries, environmental constraints and climate adaptation needs.



Territorial and Demographic Context

Mobility as a Tool for Social Cohesion

We do not see mobility only as infrastructure.

We see it as:

- A social equalizer
- A territorial connector
- A driver of economic opportunity
- A cultural bridge

Our policies are designed to reduce territorial fragmentation and increase access to education, employment and public services.



Reducing inequalities through mobility

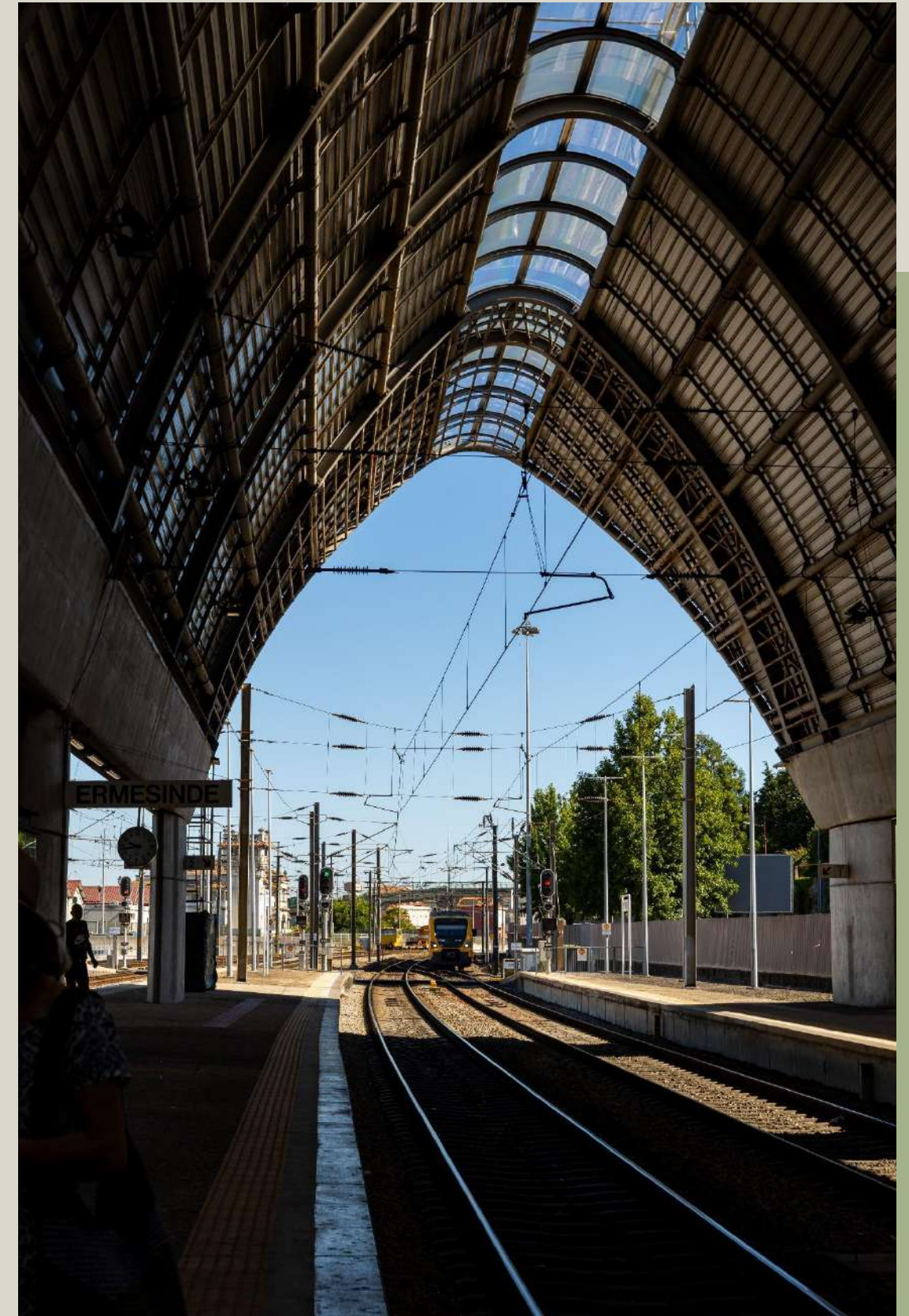
Metropolitan Integration & Public Transport Expansion

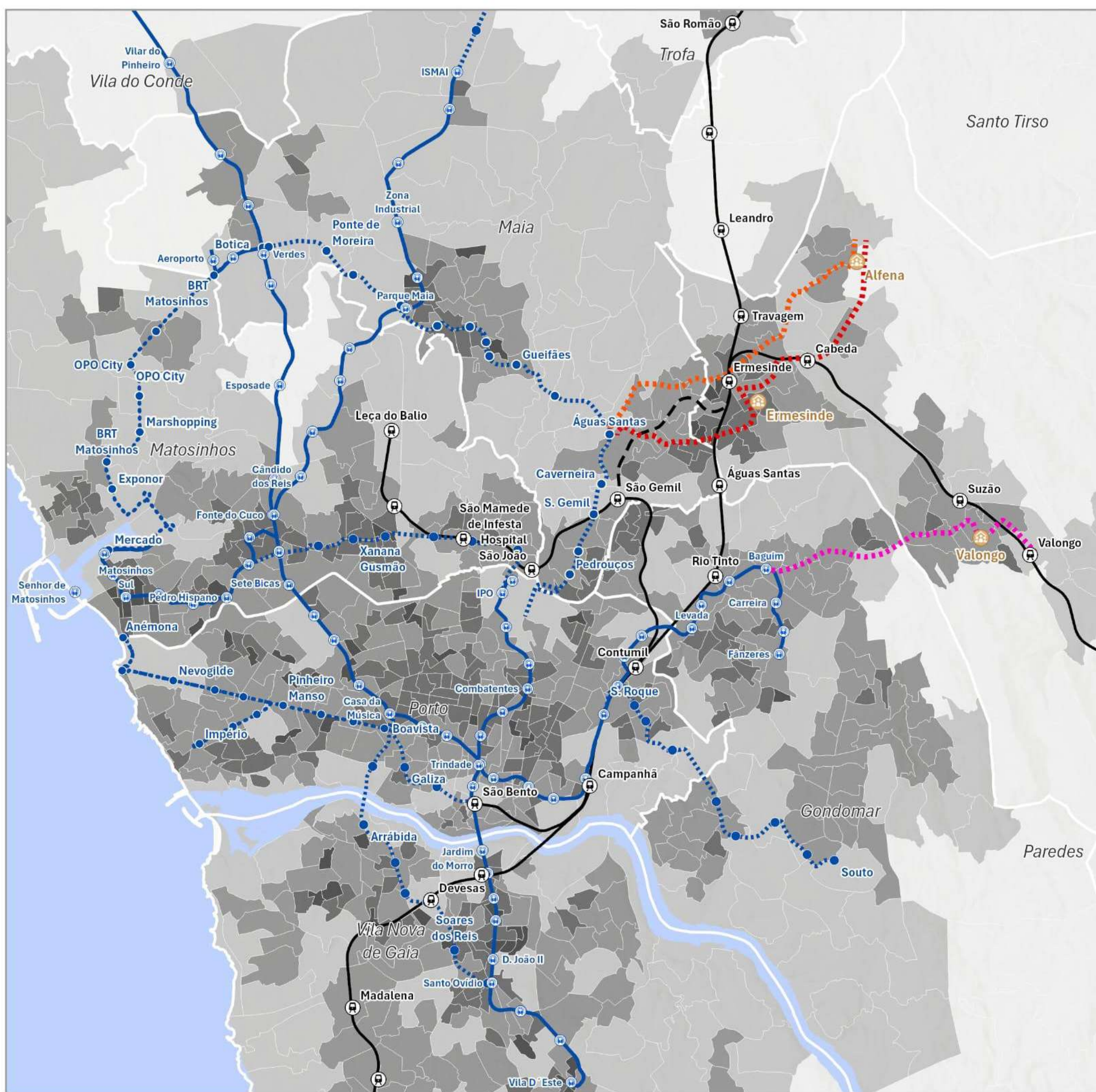
Valongo is the only municipality in the first metropolitan ring without metro service.

Our strategic work with Metro do Porto aims to:

- Reduce commuting times
- Connect peripheral neighbourhoods
- Improve access to jobs and education
- Strengthen territorial cohesion

Outcome: creation of joint technical working groups and structured mobility planning aligned with social equity goals.





**ENQUADRAMENTO DO SISTEMA
TP ATUAL , PREVISTO E
PROPOSTO**

Traçados Propostos (opções em discussão)

Maia II - Alfena

----- A1

----- A3

Baguim - Valongo

----- B1

Densidade Populacional

Pop/km2 (secção)

< 500

501 - 2 500

2 501 - 8 000

8 001 - 16 000

16 001 - 38 726

🏠 Núcleos Urbanos em análise

Redes TP existentes

Ferrovias Pesadas (CP)

🚂 Estações

— Passageiros/Mercadorias

- - - Mercadorias

Ferrovias Ligeiras (Metro do Porto)

🚇 Estações

— Linhas

Rede Metro/BRT em estudo ou em construção

Em fase de elaboração dos projetos e dos estudos de impacto ambiental

Fonte: CAOP (2024), INE (2021), TRENMO (2026).

0 0,5 1

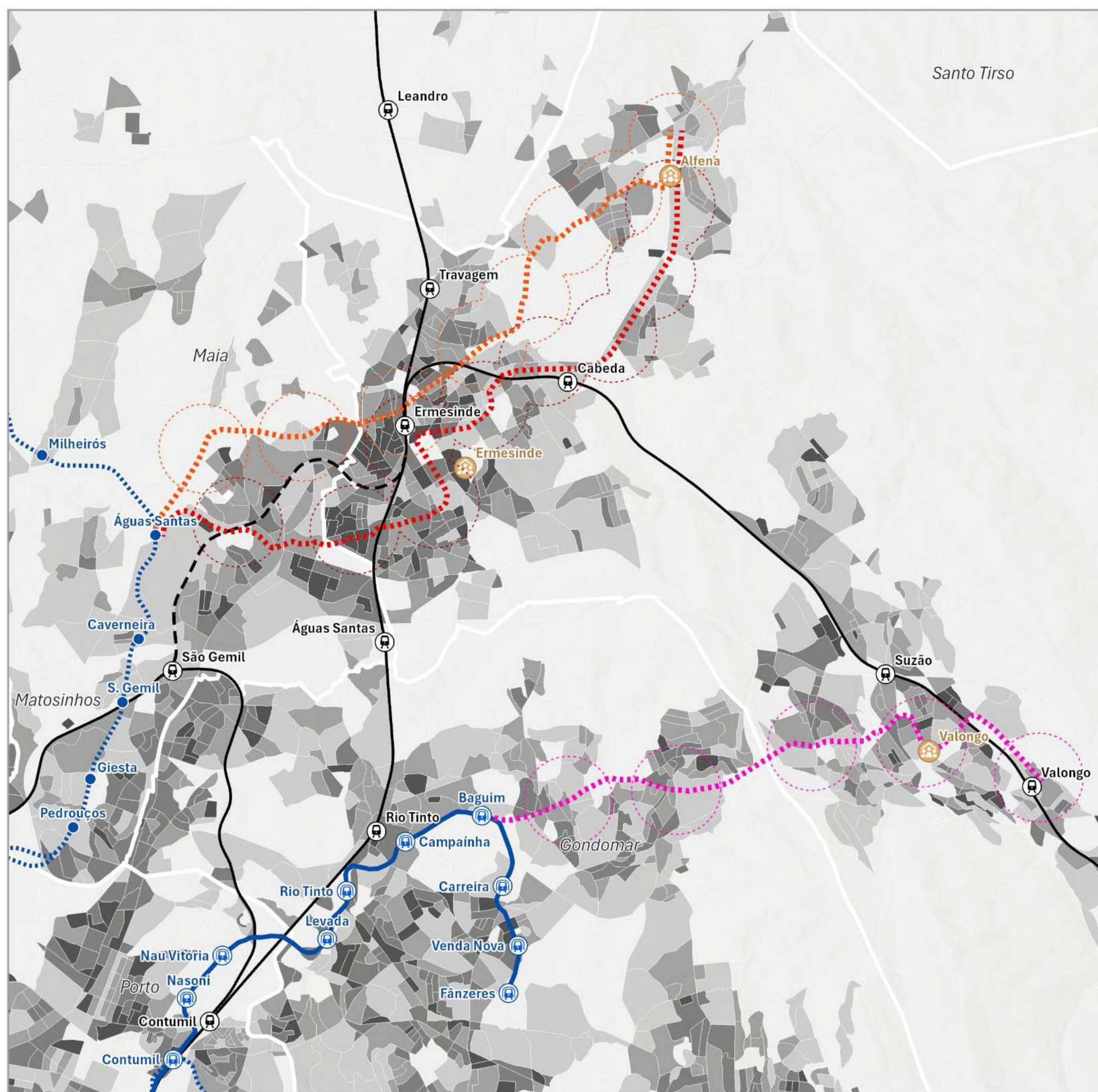


Km

SISTEMA DE PROJEÇÃO ETRS
European Terrestrial Reference System 1989



TR EN MO



**ENQUADRAMENTO DO SISTEMA
TP ATUAL , PREVISTO E
PROPOSTO**

Traçados Propostos (opções em discussão)

Maia II - Alfena

- A1
- A3

Baguim - Valongo

- B1

Densidade Populacional

Pop/km2 (subsecção)

- 0 - 1 500
- 1 501 - 4 000
- 4 001 - 8 000
- 8 001 - 16 000
- 16 001 - 40 700

Núcleos Urbanos em análise

Área estimada de captação

- A1
- A3
- B1

Redes TP existentes

Ferrovia Pesada (CP)

- Estações
- Passageiros/Mercadorias
- Mercadorias

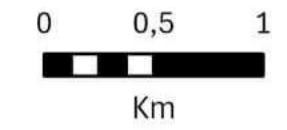
Ferrovia Ligeira (Metro do Porto)

- Estações
- Linhas

Rede Metro/BRT em construção em estudo

Em fase de elaboração dos projetos e dos estudos de impacto ambiental

Fonte: CAOP (2024), INE (2021), TRENMO (2026).



SISTEMA DE PROJEÇÃO ETRS
European Terrestrial Reference System 1989





Participatory Governance Model

OPJV – Youth Participatory Budget

- Through the Youth Participatory Budget of Valongo:
- Young people propose and vote on projects
- Mobility and public space improvements are often prioritised
- Youth become co-designers of public policy

The challenge: transforming consultation into real co-decision.
The result: increased civic trust and long-term democratic engagement.



Mobility as Cultural Bridge

ENTRELINHAS – Festa do Ferroviário

This event reactivates railway heritage and public space:

- Reconnecting communities historically shaped by rail mobility
 - Valuing identity and shared memory
 - Transforming transport infrastructure into cultural infrastructure
- Mobility becomes belonging.

9-11
MAIO 2025

FÓRUM CULTURAL
PARQUE URBANO DE ERMESINDE
LARGO DA ESTAÇÃO

CONFERÊNCIA | EXPOSIÇÕES | CONCERTOS | DJ | MOSTRA TURÍSTICA | STREET FOOD

ENTRELINHAS
FESTA DO FERROVIÁRIO

9 MAI | SEX
14H00
CONFERÊNCIA
"150 ANOS DA ESTAÇÃO DE ERMESINDE – PASSADO, PRESENTE E FUTURO"
INSCRIÇÕES EM
WWW.ON-VALONGO.PT/ENTRELINHAS
FESTADOFERROVIARIO

9 MAI | SEX
21H30
BLIND ZERO

10 MAI | SÁB
21H30
DIOGO PIÇARRA

11 MAI | DOM
21H30
ÁTOA

ValOngo | 35 anos | ermesinde | COMISSÃO DE PORTUGAL | Infraestruturas de Portugal | P

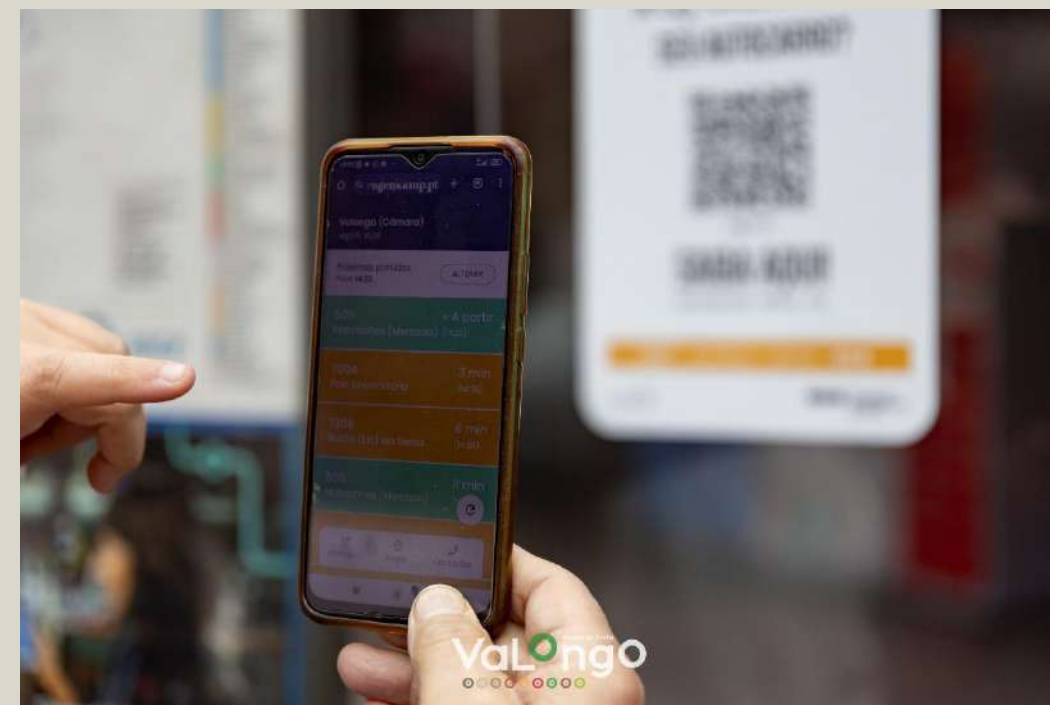
Linked Trips and Daily Life

We plan mobility around real life patterns:

- School routes
- Health access
- Local commerce
- Elderly mobility
- Caregivers' daily chains

Policies include:

- Safe school paths
- Improved pedestrian infrastructure
- Intermodal connections
- Accessibility-focused planning



Breaking Stereotypes

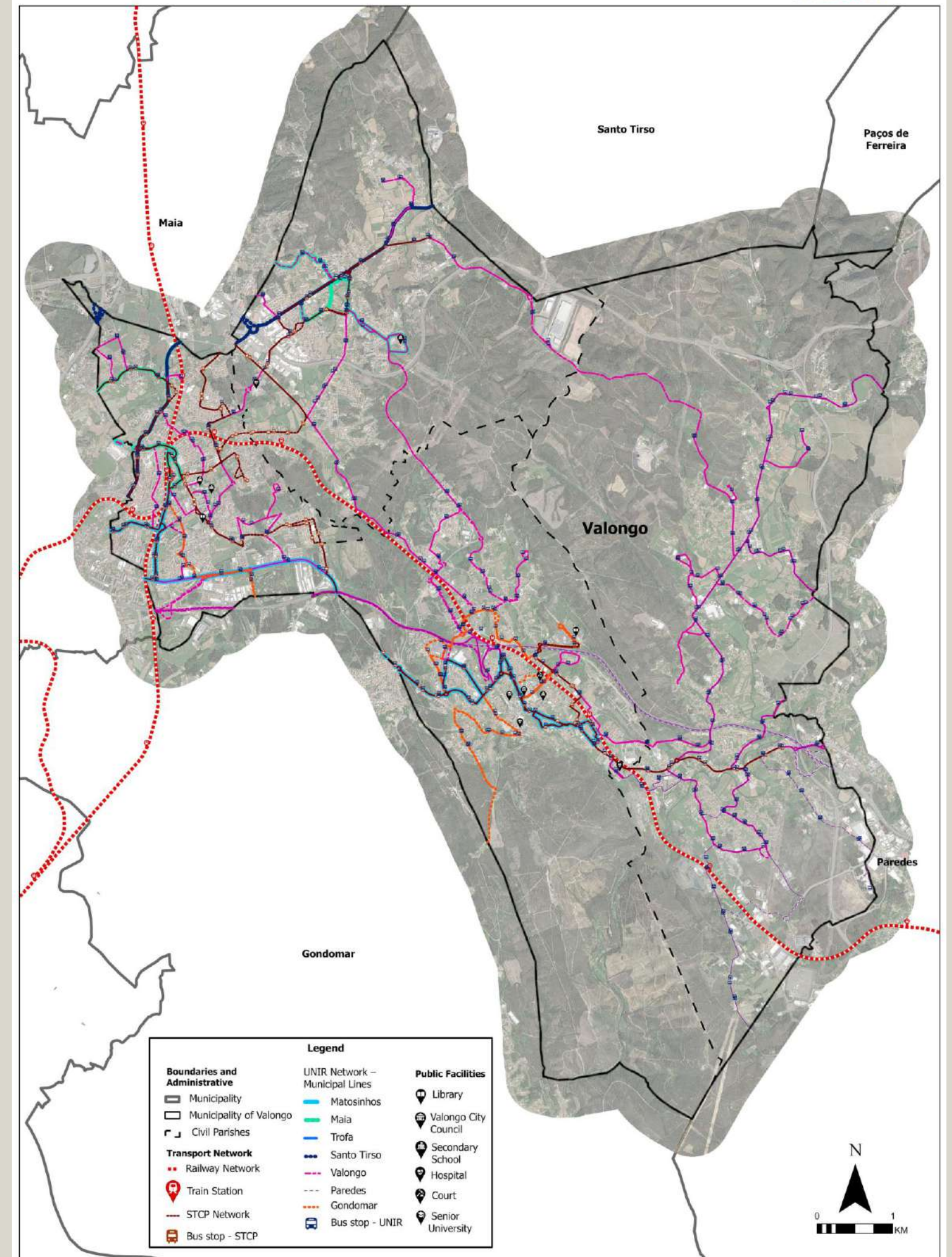
We identified the stereotype that certain neighbourhoods were “low-demand” areas for public transport.

Using:

- Data analysis
- Participatory workshops
- Direct engagement with residents

We demonstrated unmet mobility needs rather than lack of demand.

Lesson: perceived inactivity often hides structural exclusion.



Beyond Traditional Metrics

We measure:

- Perceived safety
- Public space usage diversity
- Youth participation levels
- Access time to essential services
- Community satisfaction

Mobility success is measured in dignity, not only in passenger numbers.



Green Move Impact

GreenMove influenced:

- Strategic alignment with European sustainability frameworks
- Acceleration of inter-municipal cooperation
- Stronger integration of climate resilience in mobility planning

Most valuable lesson: mobility transition requires governance transition.



Climate and System Integration

Our mobility planning integrates:

- Climate adaptation
- Public health
- Energy transition
- Emergency preparedness

Resilience requires inter-system coordination, not isolated projects.



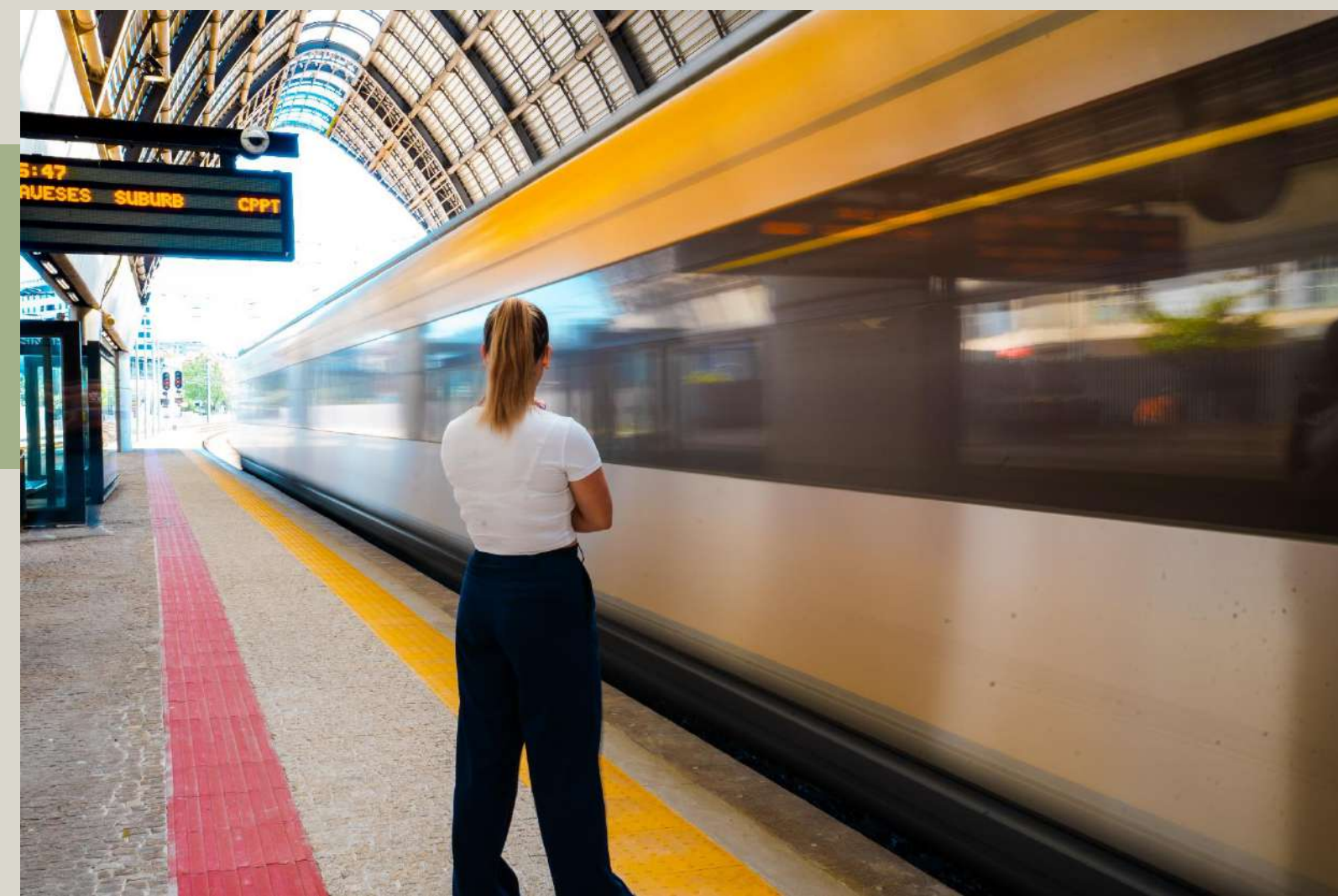
Future Commitment

Valongo is committed to:

- Climate-resilient infrastructure
- Social equity mobility metrics
- Digital mobility planning tools
- Continued GreenMove collaboration

We bring:

- Participatory governance experience
- Youth engagement tools
- Metropolitan-rural integration strategies



**Mobility is not only about moving people.
It is about moving society forward.**



**Thank for your
attention**

Contact Us

+351 224 227 900

cm-valongo.pt

jose.mariosilva@cm-valongo.pt