

Green Move

Municipality of Valongo

2 nd Event
10-13 June 2025
Siggiewi (Malta)



June, 2025

Jose.mariosilva@cm-valongo.pt

Northern Portugal, Porto Metropolitan Area

~95,000 inhabitants, mix of urban & natural areas
(e.g., Serras do Porto)

Strategic commitment to sustainability
through PAES 2030 and PMAC



About Valongo

Energy Transition Strategy

- Partnership with EDP Comercial
- Energy Performance Contract (EPC) zero upfront municipal investment
- Focus on renewable energy + efficiency + digital monitoring
- 5 buildings equipped with photovoltaic systems



Solar Energy Project

Public Buildings Equipped



- Campelo Primary School
- Mirante dos Sonhos Primary School
- Valado Primary School
- Alfena Secondary School
- Municipal Technical Services Building



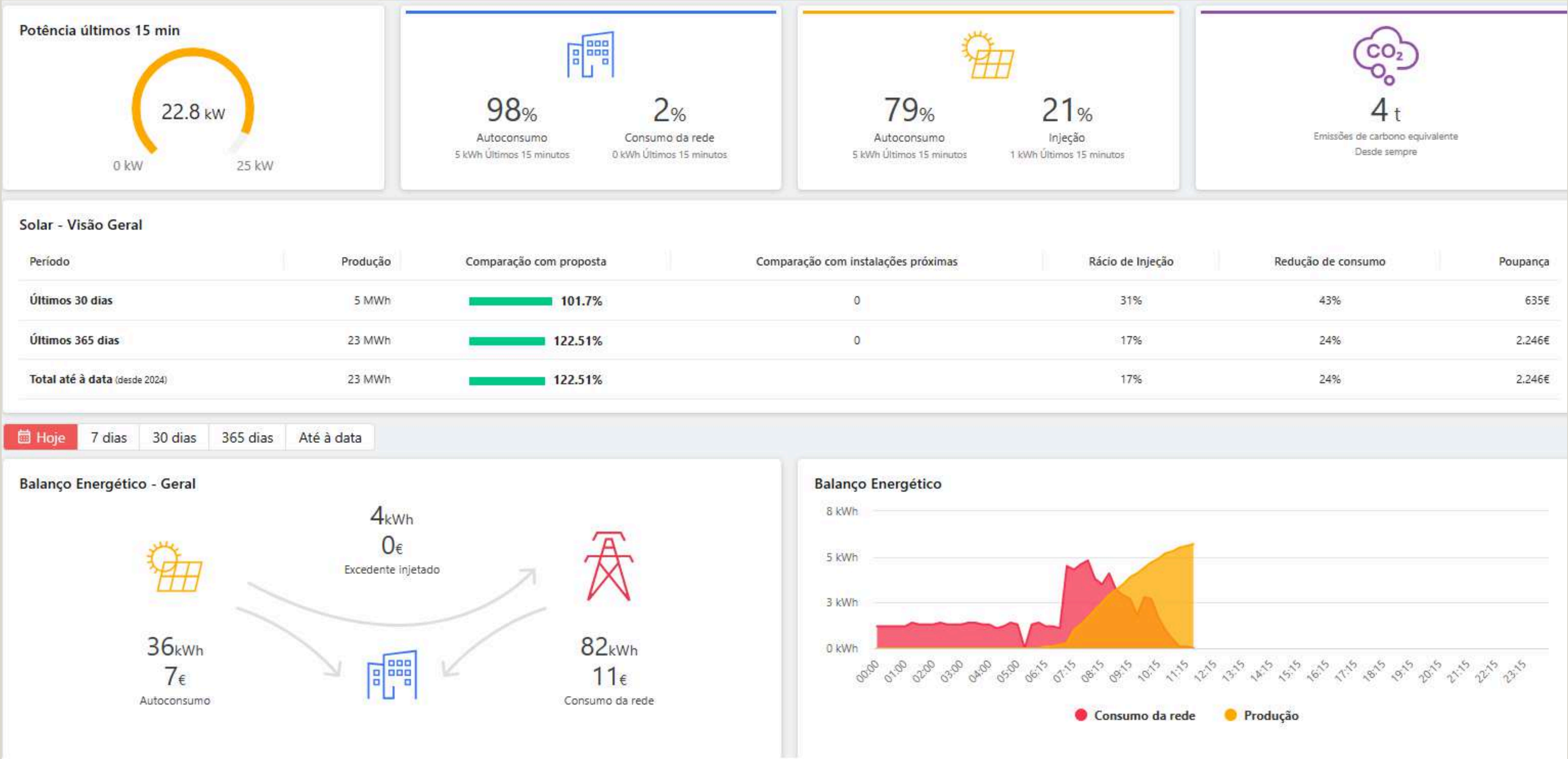


Performance & Impact

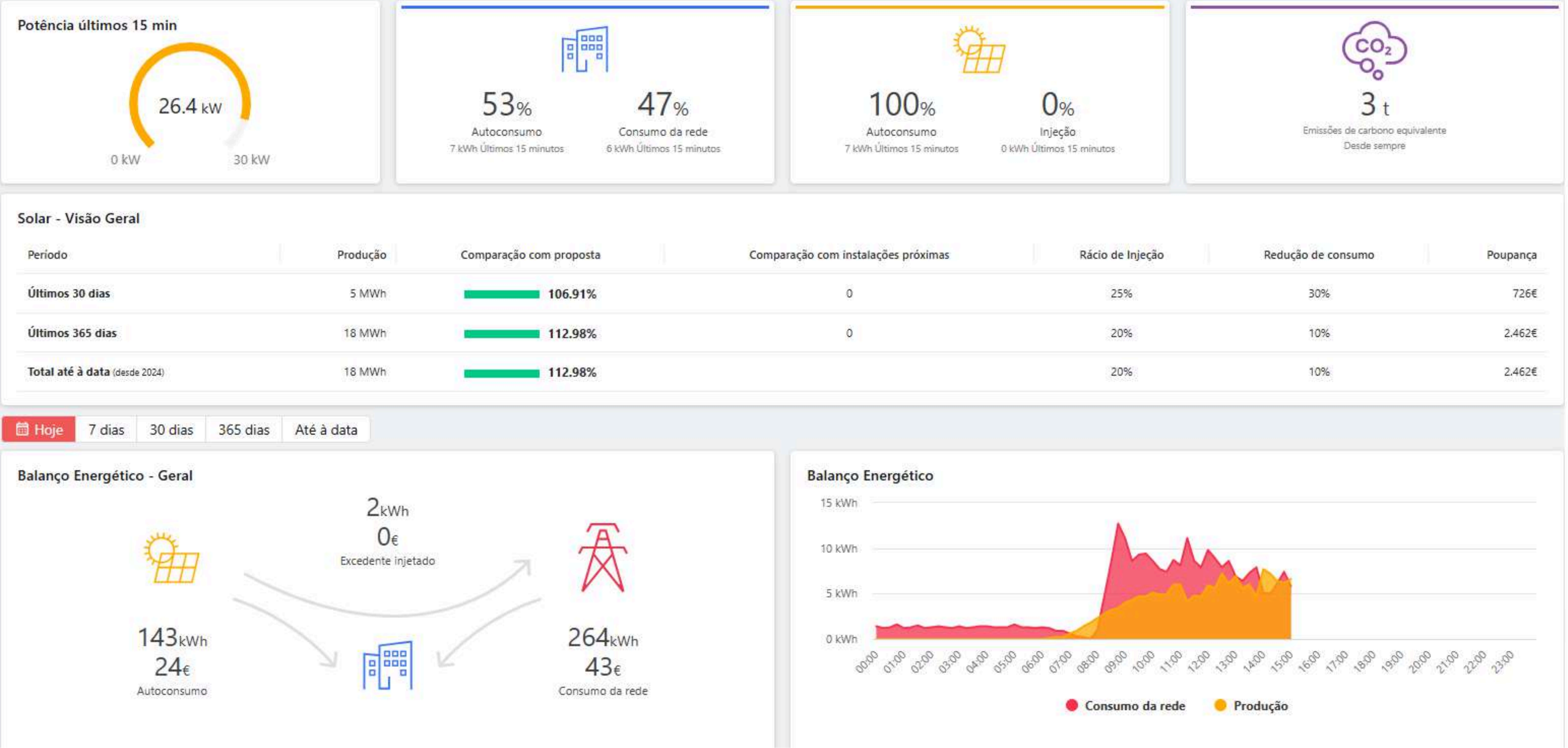
Real Impact of Solar Energy

- Total annual output: 197 MWh
- Average cost reduction: 44.36%
- Campelo: -84% energy bill
- Total savings: ~€31,608/year
- CO2 reduction: several tons/year
- Smart dashboards: live monitoring, preventive maintenance

Dashboard - Mirante dos Sonhos School



Dashboard - Alfena School



Public Lighting



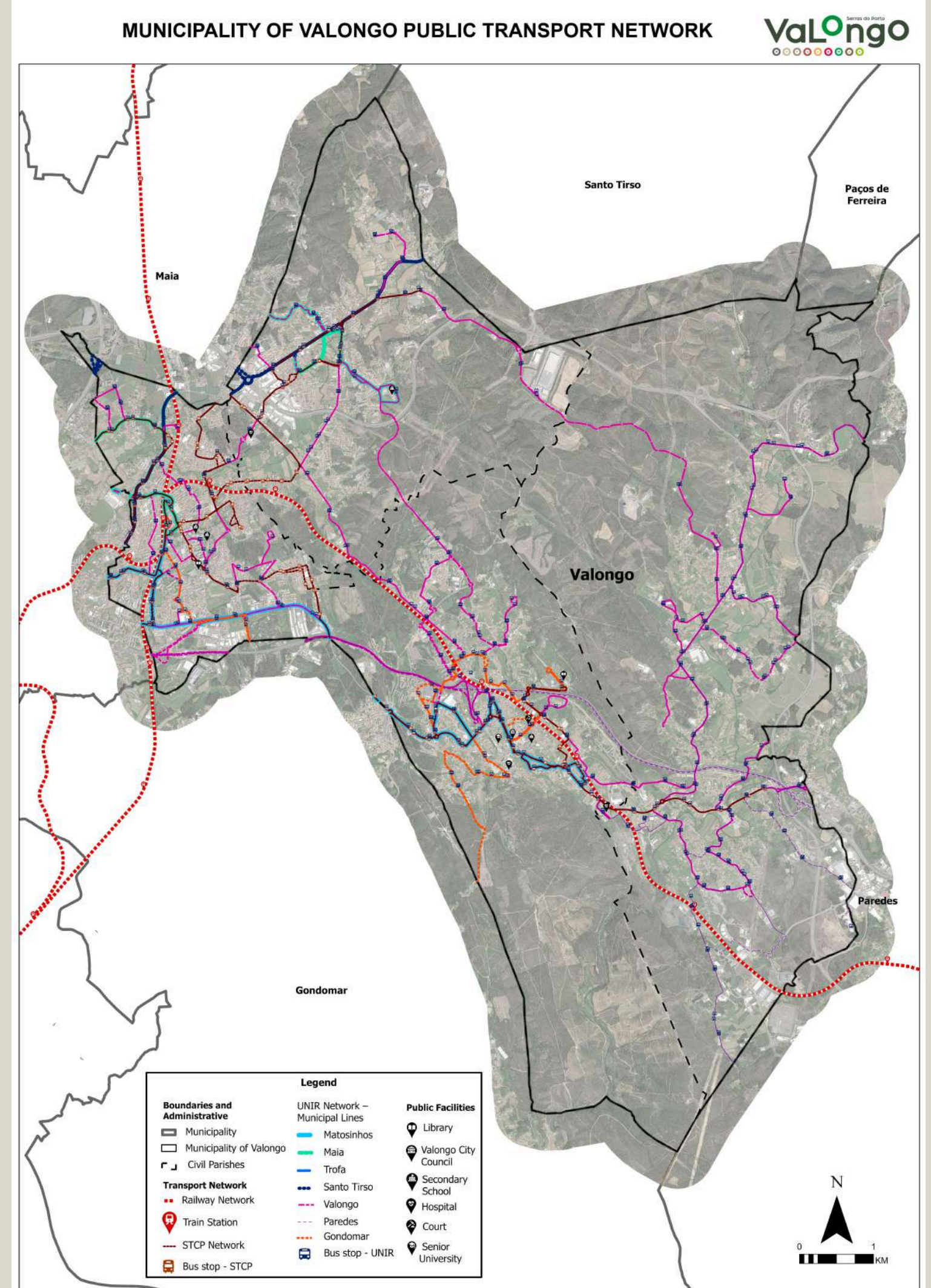
Efficient Public Infrastructure

- 100% LED lighting: over 15,500 luminaires replaced
- Annual savings: >4.2 GWh
- CO2 emissions avoided: ~1,495 tons/year
- Improved lighting quality and safety

Smart & Sustainable Mobility

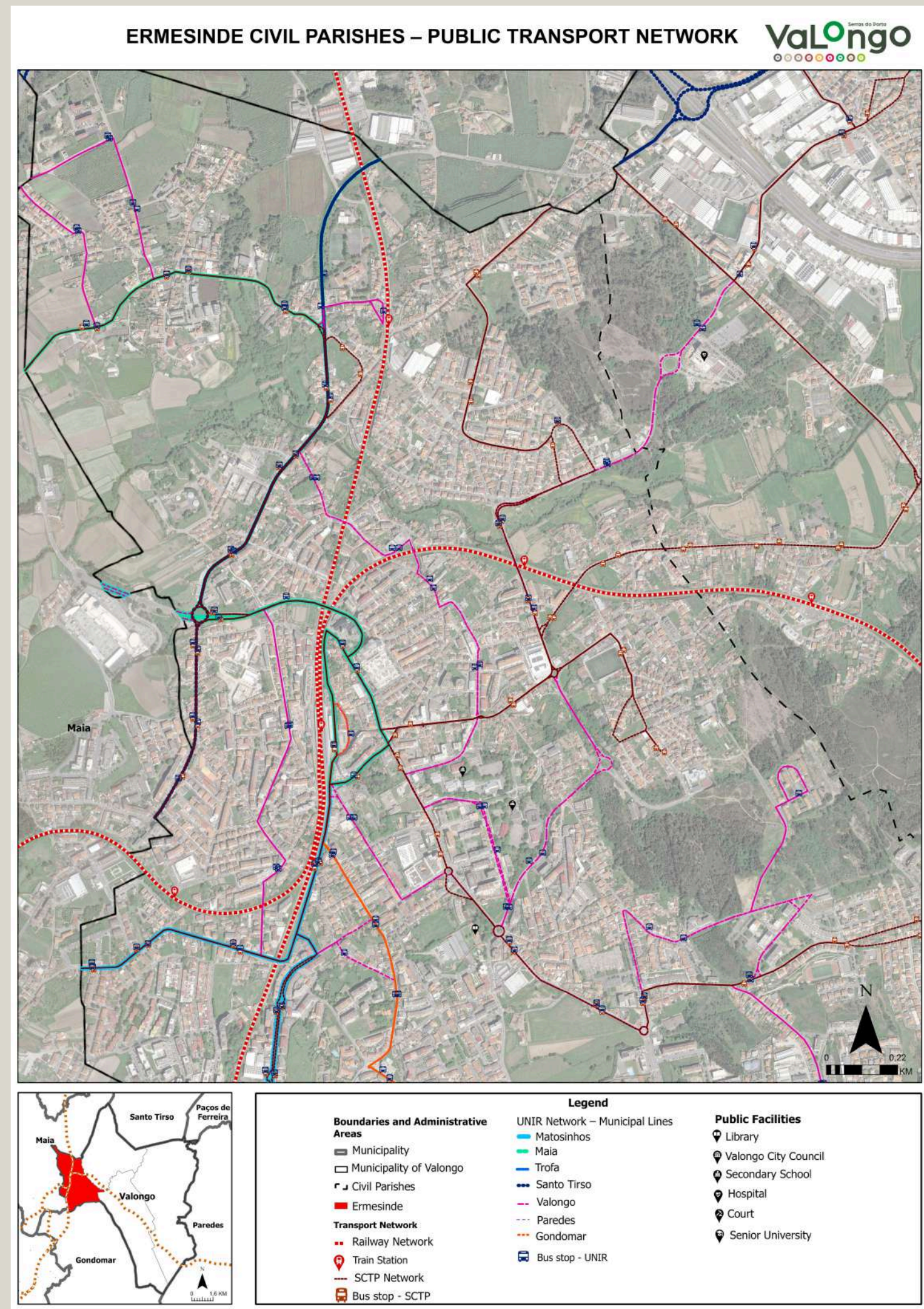
Integrated Mobility

- Regional Connectivity
- New bus lines, timetables & intermodal hubs
- Better urban-suburban integration
- Focus on frequency and accessibility

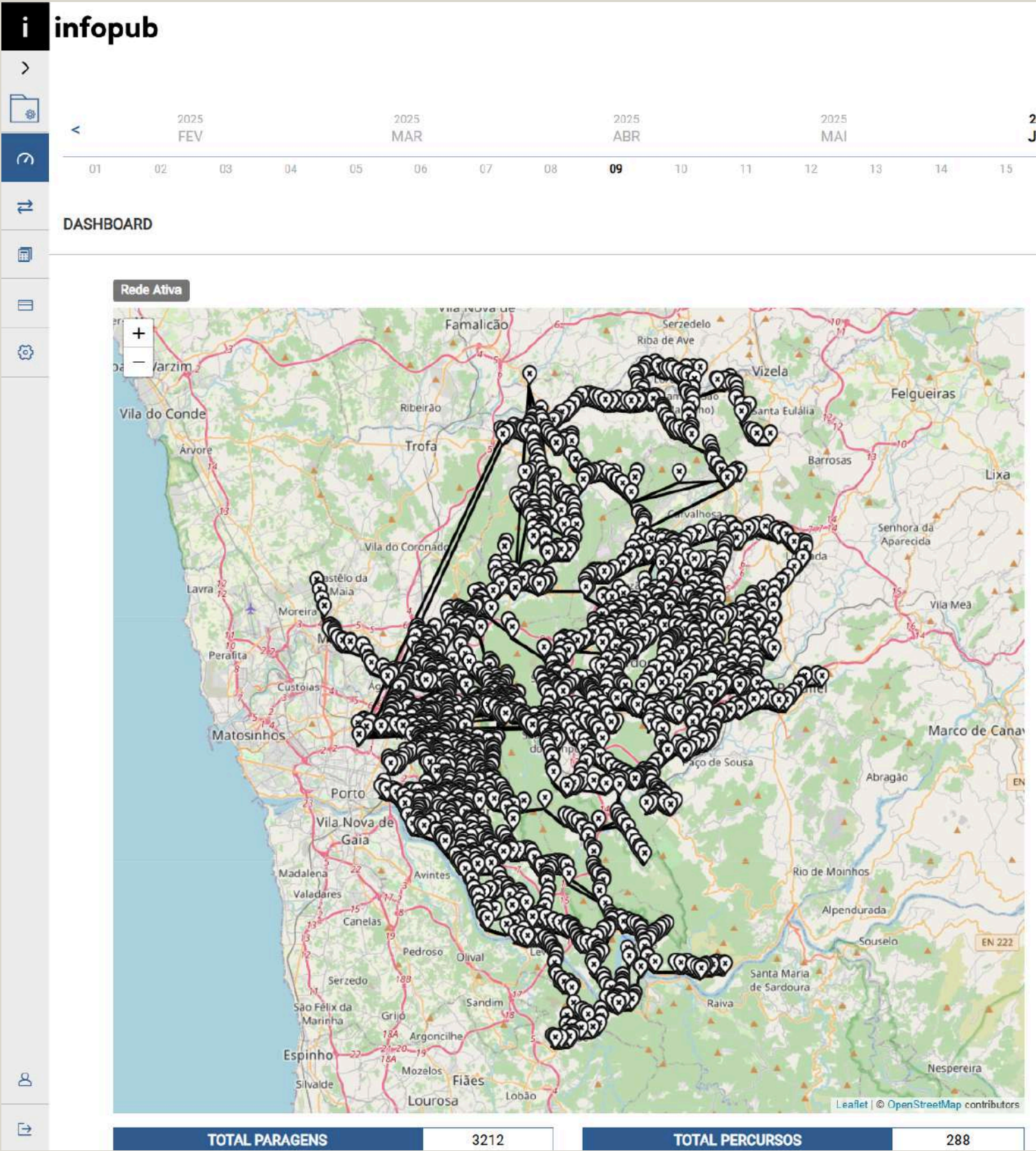


Maps of Ermesinde public transport networks

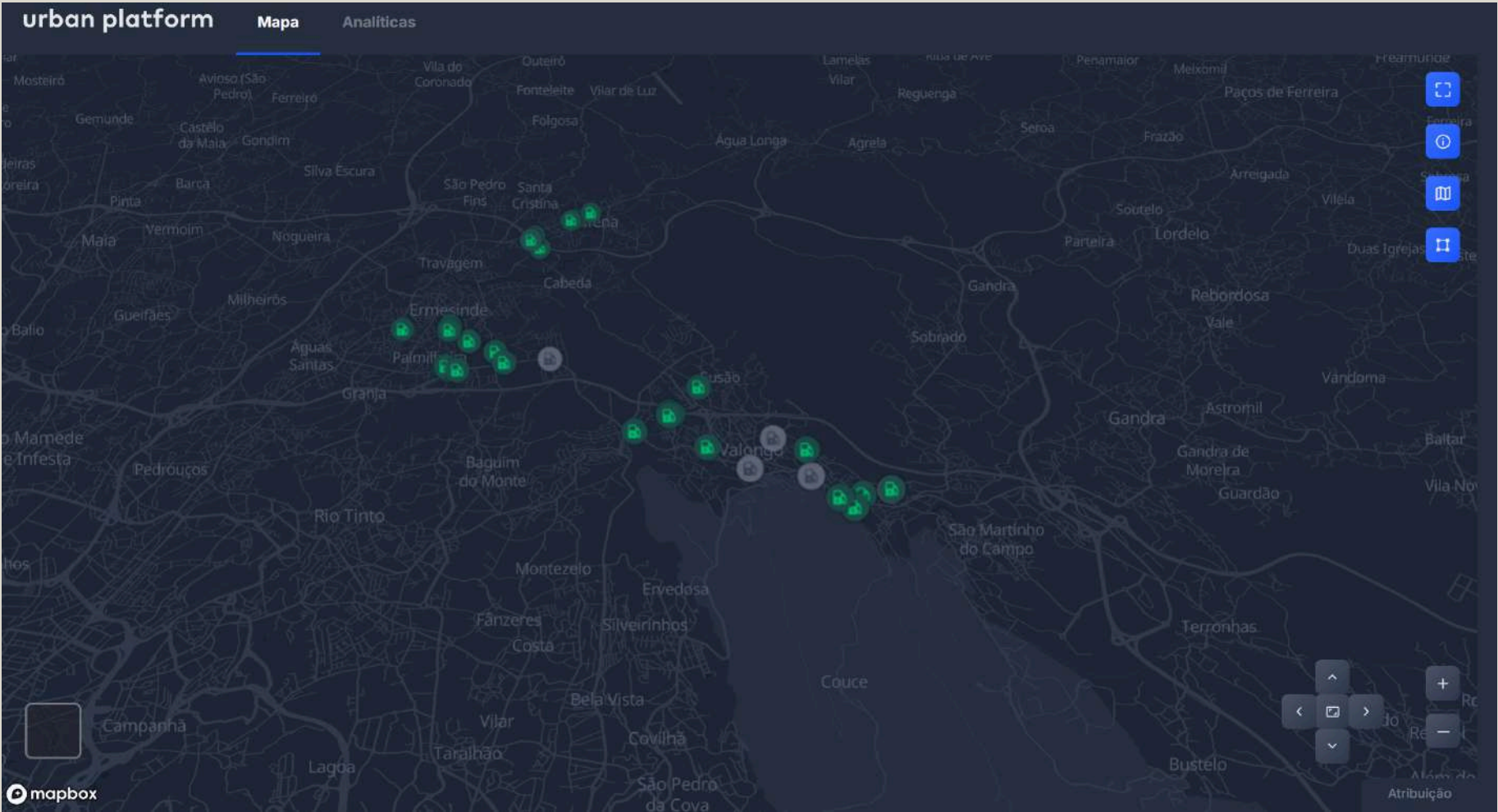
Public Transport Experience
INFOPUB system: bus data at
300+ stops
Digital platform
Improved reliability and user
experience



unir-valongo.infopub.pt

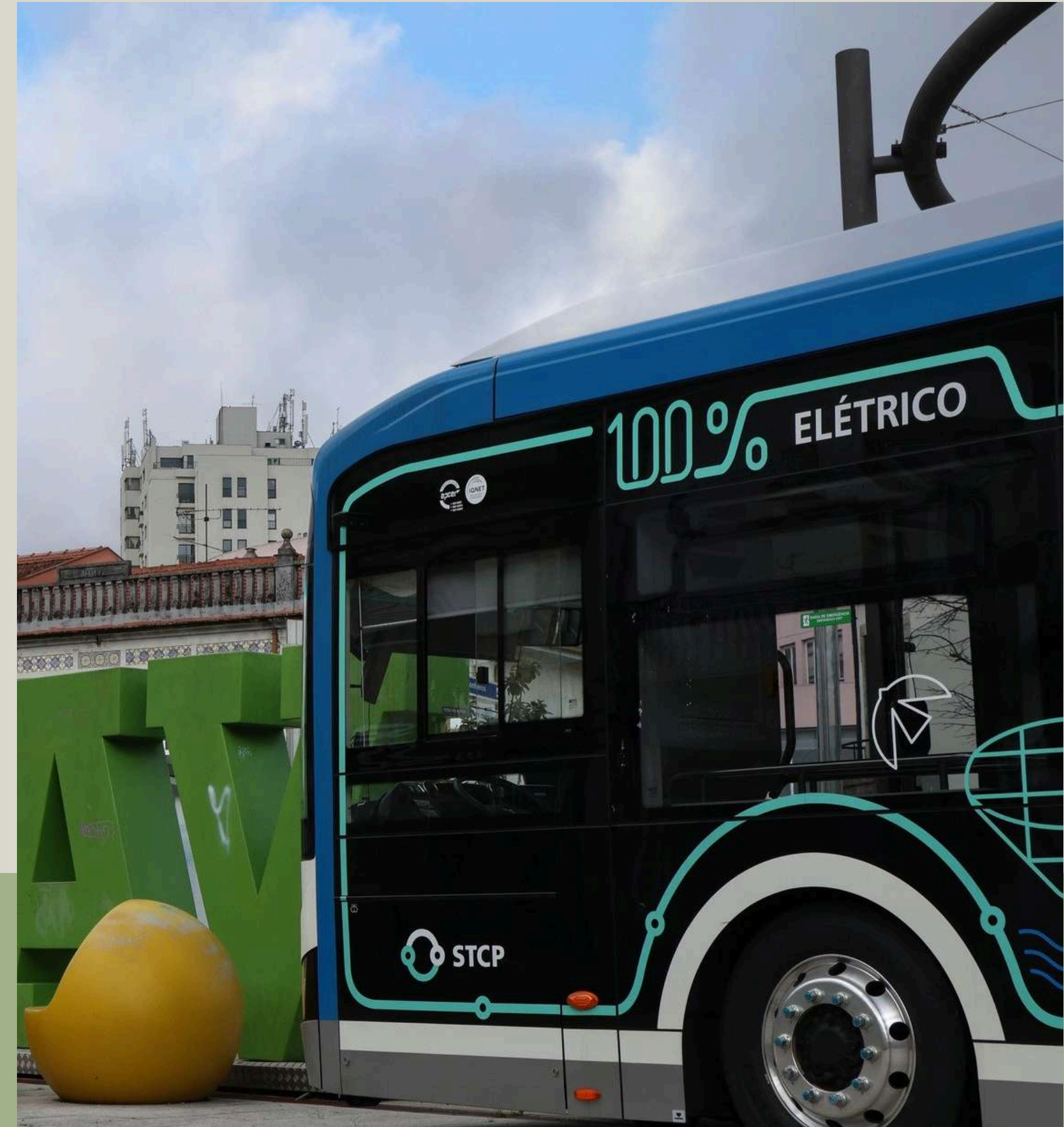


Valongo.urbanplatform.city



- **Municipal Regulation (2023): enabling private investment**
- **10-year licenses, 50% fee reduction (first 5 years)**
- **Mandatory grid integration, universal access, accessibility**
- **Transparent licensing and fair evaluation criteria**

EV Charging Infrastructure



Q&A (Questions and Answers)





Thank for your attention

Contact Us

+351 224 227 900

cm-valongo.pt

jose.mariosilva@cm-valongo.pt