

TARGET 2026

METAURO'S CYCLE PATH



FANO MUNICIPALITY



GOALS

01.

SUSTAINABLE MOBILITY

02.

ROAD SAFETY

03.

TOURISM PROMOTION

04.

**DEVELOPMENT OF CYCLING
INFRASTRUCTURE**

05.

IMPROVED AIR QUALITY

06.

**PROMOTING HEALTHY
LIFESTYLES**

07.

**PROMOTION OF THE
TERRITORY**



Connection of different rural centers: from the hill to the sea parallel to the railway

01. SOME PROBLEMS



- The biggest problems have been encountered with expropriations of private land
- A broken path that makes cycling difficult
- Crossing rivers is difficult
- Roads often too small and dangerous
- the cycle path often crosses roads in extra-urban areas with heavy traffic from cars that travel along the road at high speed



02. SOME SOLUTION



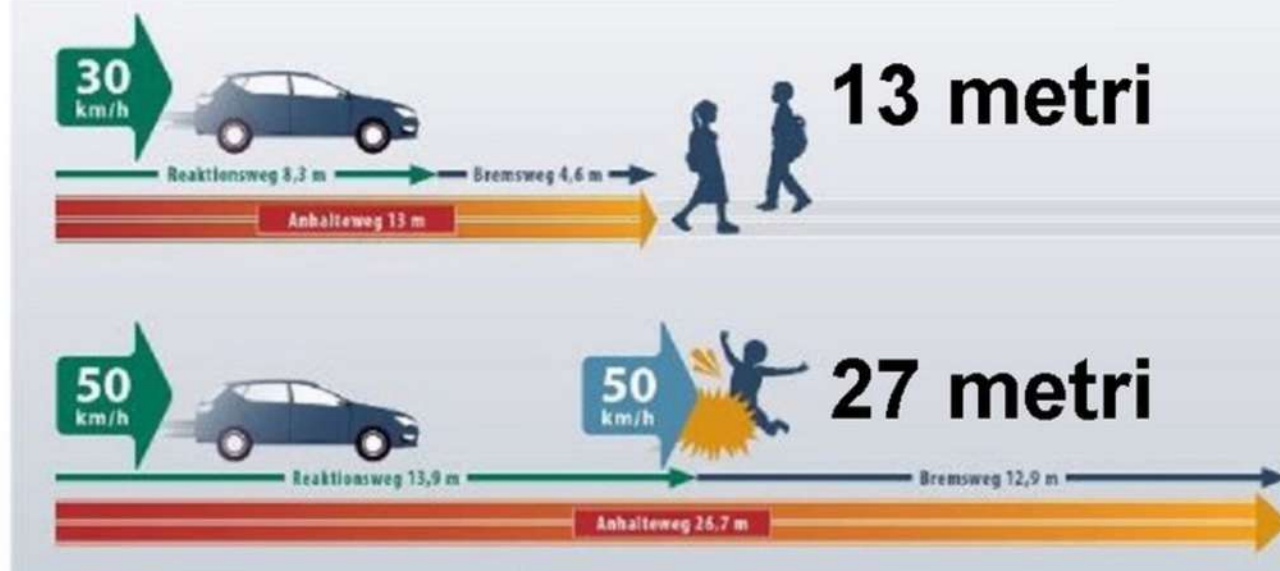
URBAN CYCLE STREET (Introduced by the new highway code from Minister – now is a law)
It is an urban road with a single carriageway, with paved shoulders and sidewalks, with a speed limit not exceeding 30 km/h, defined by specific vertical and horizontal signs, with priority for bicycles.

03. E BIS STREET

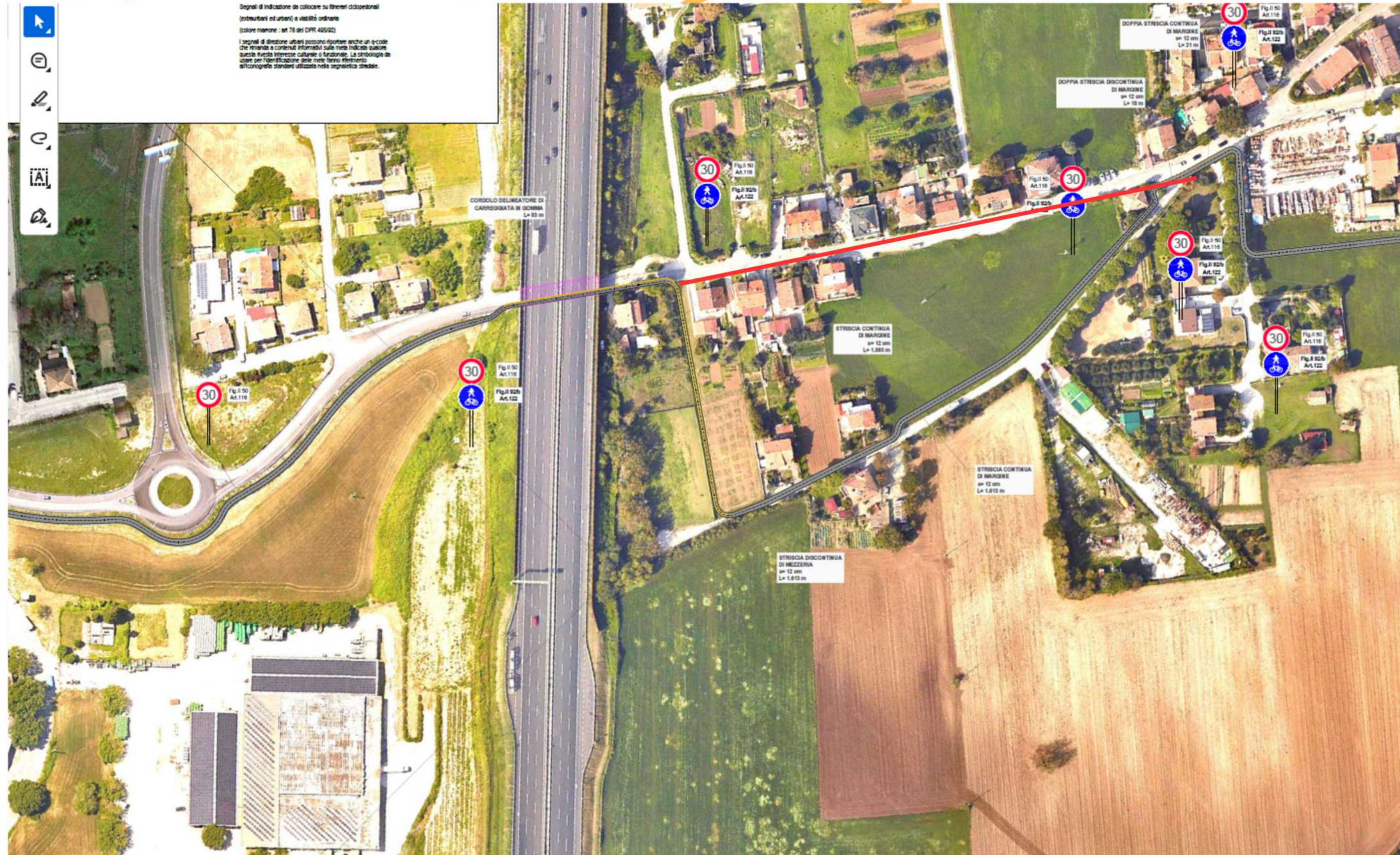
REDUCE SPEED TO ALLOW CYCLISTS AND CARS TO COEXIST SAFELY



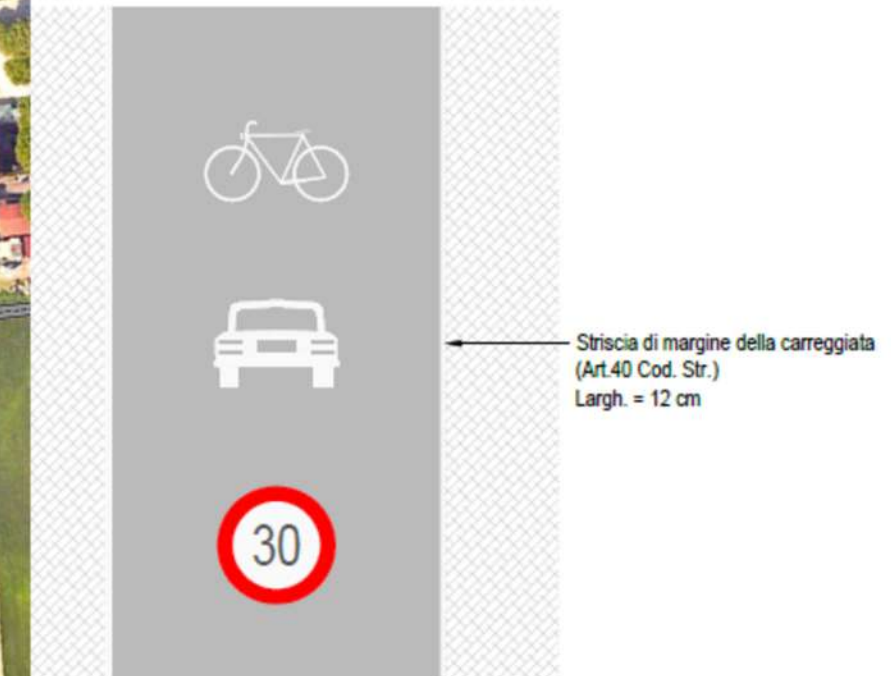
spazio arresto a 30 e 50 km/h



03. PARTICULARS OF THE PROJECT



TIPOLOGICO PITTGRAMMI PER PERCORSO CICLABILE IN PROMISCUO ZONE 30



SEGNALETICA "LINEE GUIDA CICLOVIE DELLE MARCHE"



LIVELLO 1

Segnali di indicazione da collocare su itinerari ciclopedonali (extraurbani ed urbani) a viabilità ordinaria (colore marrone : art 78 del DPR 495/92)

I segnali di direzione urbani possono riportare anche un q-code che rimanda a contenuti informativi sulla meta indicata qualora questa rivesta interesse culturale o funzionale. La simbologia da usare per l'identificazione delle mete fanno riferimento all'iconografia standard utilizzata nella segnaletica stradale.

04. PARTICULARS OF THE PROJECT



The solution adopted is to create speed moderation works also on these extra-urban roads by introducing raised crossings and luminous signs



05. A NEW CYCLE BRIDGE

A new cycle bridge will finally guarantee the connection.

Currently cyclists are forced to go through a very dangerous roundabout due to heavy traffic and also because it is used by trucks





FANO MUNICIPALITY
THANK YOU!