

# INNOVATIVE TECHNOLOGIES FOR SUSTAINABLE MOBILITY AND ENERGY EFFICIENCY IN RURAL CONTEXTS





# GALICIA'S COMMITMENT TO SUSTAINABILITY

Strategic Investments: The Xunta de Galicia has mobilized €3 billion in green investments, focusing on renewable energy, sustainable mobility, and energy efficiency.



Sustainable Financing: Through sustainable bonds, Galicia has allocated funds to renewable energies (40%), sustainable mobility (25%), and energy efficiency projects (15%).

Community Energy Initiatives: Programs like EDP Energía Solidaria support the creation of energy communities in rural areas, promoting local renewable energy generation and consumption.



# TECHNOLOGICAL INNOVATIONS IN RURAL AREAS



Electric Medical Transport: The Galician Health Service (SERGAS) introduced electric ambulances in Ourense, reducing CO<sub>2</sub> emissions and operational costs in medical transport.

Smart Mobility Solutions: In Valdeorras, alternative public transport models have been analyzed to enhance sustainability and cohesion in rural areas.



Pedestrian-Friendly Urban Planning: Pontevedra has transformed its city center by prioritizing pedestrian mobility, leading to a significant reduction in fossil fuel emissions.





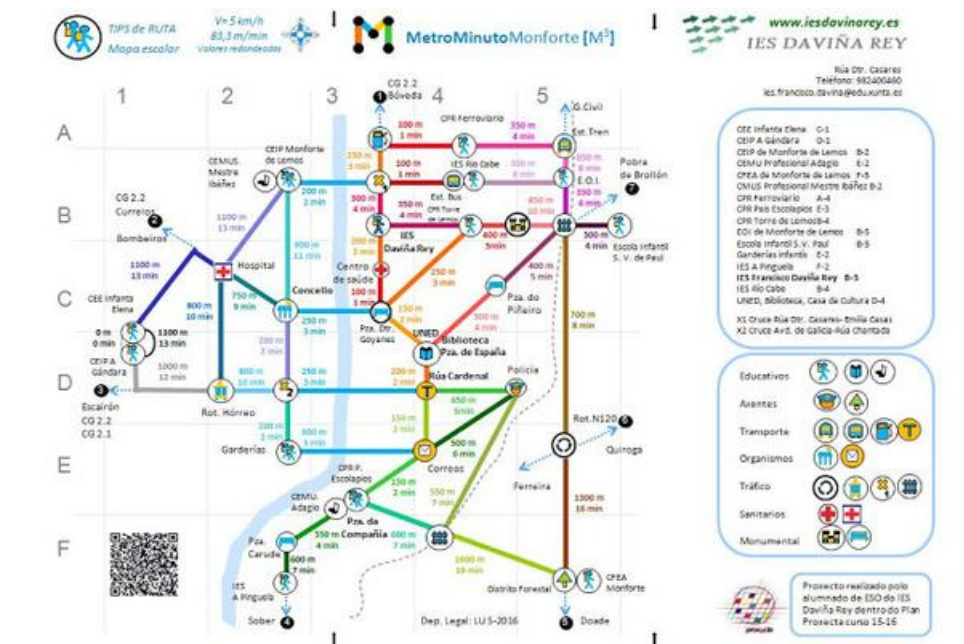
# CASE STUDIED AND BEST PRACTICES IN SUSTAINABLE MOBILITY AND ENERGY EFFICIENCY FROM GALICIA



# PONTEVEDRA - A MODEL FOR PEDESTRIAN-CENTRIC URBAN DESIGN

Urban Transformation: Since 1999, Pontevedra has pedestrianized its city center, reducing car traffic and enhancing walkability.

Metrominuto Initiative: This schematic pedestrian map encourages walking by displaying distances and average walking times between key city points.



Impact: The city has seen a 67% reduction in fossil fuel emissions and has become a reference for sustainable urban mobility.



# OURENSE HOSPITALS - ELECTRIFYING MEDICAL TRANSPORT

Challenge: Addressing high CO<sub>2</sub> emissions from medical transport in a region with an aging population and extreme weather conditions.

Solution: Deployment of electric ambulances for non-urgent patient transfers, leading to improved air quality and reduced energy consumption.

Results: Significant cost savings and a decrease in greenhouse gas emissions, showcasing the benefits of sustainable practices in healthcare services.



THANK YOU

