

GreenMove

Transforming Rural Mobility for a Sustainable Future

Meeting 2 Hosted by Siggiewi Local Council,
Malta

Presented by Francine Farrugia Local Councillor



Co-funded by
the European Union



KUNSILL LOKALI
IS-SIĠĠIEWI
Città Ferdinand


green move
TRANSFORMING SUSTAINABLE FUTURE

Introduction

- GreenMove grant and goals
- Siggiewi's commitment to sustainability
- Alignment with EU and national strategies



Key Initiatives in Siggiewi



1. Road
Simulation
Educational Park



2. Cycling
Infrastructure



3. Heritage Trail



KUNSILL LOKALI
IS-SIĠĠIEWI
Città Ferdinand



Road Simulation Educational Park – Siggiewi Family Park

- Purpose: Road safety education and active mobility
- Features: Miniature roads, signage, traffic lights
- Impact: Better road safety awareness and reduced traffic

Road Simulation Educational Park – Siggiewi Family Park



KUNSILL LOKALI
IS-SIĠĠIEWI
Città Ferdinand


green mo
THE GREEN MO COUNCIL

Cycling Infrastructure in San Niklaw

- Improvements: Cycle lanes, surface upgrades, traffic calming
- Impact: Increased cycling, reduced car use
- Next steps: Bike-sharing and e-bike connections



KUNSILL LOKALI
IS-SIGĠIEWI
Città Ferdinand



Cycling Infrastructure , Vjal kulhadd



KUNSILL LOKALI
IS-SIGGIEWI
Città Ferdinand

gre
TRAN

EkoSkola Heritage Trail with QR Codes

- Digital walking trail linking heritage and mobility
- QR codes with historical/environmental facts
- Benefits: Active travel, youth engagement, tourism boost



KUNSILL LOKALI
IS-SIGĠIEWI
Città Ferdinand



EkoSkola Heritage Trail with QR Codes



STOP 1

Parish Church

The Siggiewi Parish Church is dedicated to St Nicholas of Bari and is a replacement of the original parish church located in another part of the village. The feast of St. Nicholas is celebrated every June and the liturgical feast is celebrated on December 6th.



STOP 2

Old Streets Area

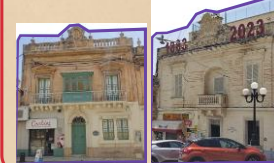
In the village core a number of houses have been restored to their former glory keeping traditional features of Maltese houses. The streets adorned with niches dating back to the 17th century are also host to the armoury which housed the Master of Arms and served as a place for storage of weapons.



STOP 3

Band Clubs

The two Band clubs are part and parcel of the social and cultural heritage of the village with the teaching of music but also through their involvement in so many social, cultural and religious activities throughout the year.



STOP 4

Ghar Lapsi

Ghar Lapsi is a small rocky inlet yet one of the most unmissable spots in Siggiewi. It boasts a natural cave and green-blue waters from where one can admire the islet of Filfla. Over the Summer months locals and tourists alike flock to the rocky beach to enjoy the crystal-clear sea.



STOP 5

Fawwara

The Fawwara area is a perfect excuse to explore the Maltese countryside. As you walk be ready to be met by farmers working their fields, blooming fields, rural passages, people trekking, little chapels and breath-taking views that stretch up to the coast.



STOP 6

Verdala Palace

Verdala Palace serves as the official summer residence of the President of Malta. The Palace was built in 1586 by Grand Master Hugues Loubenx de Verdalle to serve as a countryside retreat and thus the name Verdala.



STOP 7

RMJ

RMJ Horse Rescue was established in 2016 caring for horses which needed to be rescued or rehabilitated and then finding them a home. The majority of horses are ex-racehorses that have finished their career. RMJ Horse Rescue is run entirely by volunteers.



KUNSILL LOKALI
IS-SIGĠIEWI
Città Ferdinand



EkoSkola Heritage Trail with QR Codes



KUNSILL LOKALI
IS-SIGĠIEWI
Città Ferdinand



Case Study: Walk to School Bus



KUNSILL LOKALI
IS-SIGĠIEWI
Città Ferdinand



green move
TRANSFORMING SUSTAINABLE FUTURE

Case Study: Walk to School Bus



Challenge: Traffic and lack of active travel



Solution: Community-led walk-to-school groups



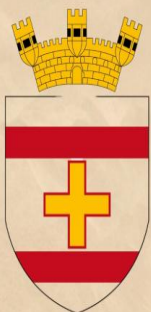
Impact: Reduced car use, healthier kids, community spirit



KUNSILL LOKALI
IS-SIGĠIEWI
Città Ferdinand



Case Study: Walk to School Bus



KUNSILL LOKALI
IS-SIĠĠIEWI
Città Ferdinand

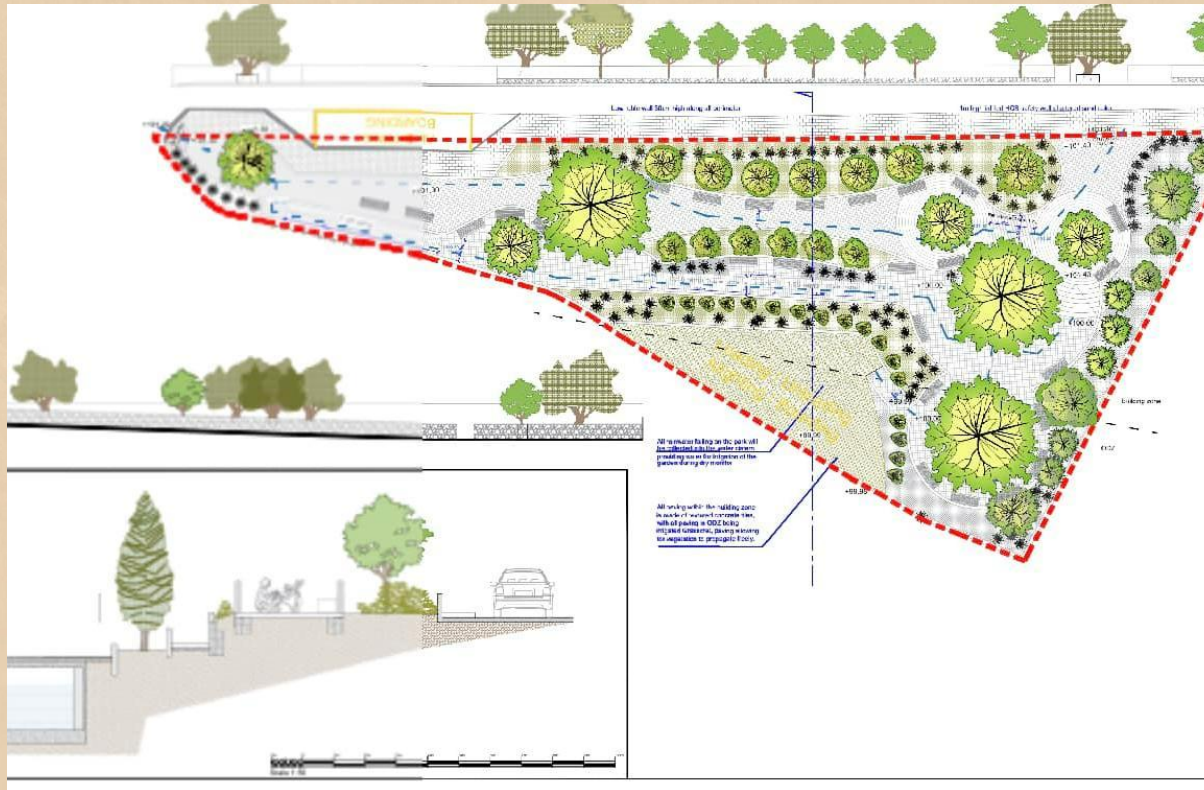


green move
TRANSFORMING SUSTAINABLE FUTURE

Collaboration Strategies

- Early stakeholder engagement
- Co-design with residents
- Public-private partnerships
- Consistent communication and transparent governance

Reading Garden



KUNSILL LOKALI
IS-SIGĠIEWI
Città Ferdinand



Charging pillars



KUNSILL LOKALI
IS-SIGĠIEWI
Città Ferdinand



green move
TRANSFORMING SUSTAINABLE FUTURE

Promoting Democratic Dialogue & European Identity

- Inclusive consultations and youth councils
- Events: Clean Mobility Week, heritage walks
- Local action as part of European Green Deal



KUNSILL LOKALI
IS-SIĠĠIEWI
Città Ferdinand



Capacity Building & Future Training

- Youth-focused programs, eco-workshops
- Hands-on learning and co-creation
- Empowering women and marginalised groups





KUNSILL LOKALI
IS-SIGĠIEWI
Città Ferdinand


green move
TRANSFORMING SUSTAINABLE FUTURE

Conclusion & Vision

- Siggiewi as a model for rural sustainability
- Key message: Collaboration and education drive change
- Commitment to expand efforts



Acknowledgements

- Thanks to partners, schools, and community groups



KUNSILL LOKALI
IS-SIGĠIEWI
Città Ferdinand



Co-funded by
the European Union

